

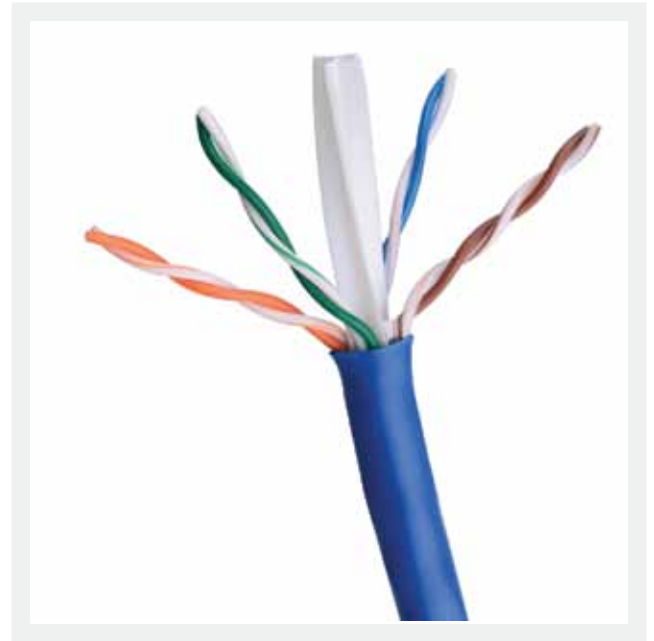


STRUCTURED  
CABLING PARTNER

## Category 6 U/UTP 4 Pair 23AWG Cable

### OPTIPLUS Category 6 U/UTP (Unshielded Twisted Pair)

4 Pair 23AWG cable is a high-speed & excellent data communication cable. It conveys high bit-rate signaling for extended distances in backbone & horizontal applications. Optiplus cables can support bandwidths up to 250MHz and are best suitable for 10BASE-T, 100BASE-TX (Fast Ethernet), 1000BASE-T/1000BASE-TX (Gigabit Ethernet). It can support a distance up to 100 meter or 328 feet without extra signal boosters or signal amplifiers.



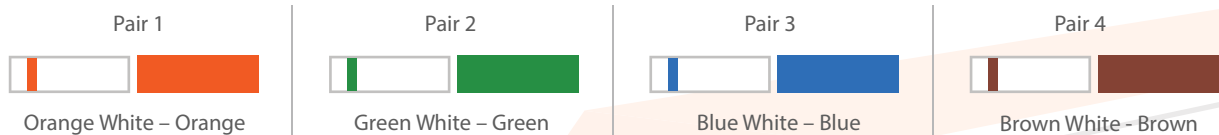
### Standards

- ANSI/TIA-568-C.2
- TIA/EIA 568-B.2-1
- ISO/IEC 11801
- ISO/IEC 611156-5
- EN 50288-1
- EN 50173-1
- IEEE /802.af, IEEE 802.3at for PoE applications

### Key Features:

- Tested up to 250MHz.
- High ACR values-providing low BER (Bit Error-Rate).
- Exceeds Cat 6 performance.
- Extremely high pair-balance-providing excellent EMC (Electromagnetic Compatibility).
- Maximum noise immunity and minimum radiations.
- UL94V-0 rated plastic.
- Standard packing will be 305 meter easy pull out box.

### Colour Code:



### Cable Construction:

Conductor Material	23AWG Solid Bare Copper
Conductor Construction	Solid
Conductor Diameter	0.56mm
Insulation Material	HDPE (HIGH DENSITY POLY ETHYLENE)
Insulation Diameter	1.03 ± 0.03mm
Pairs Count	4 nos
Jacket Thickness (mm)	0.55mm ± 0.05mm
Jacket Material	PVC, Low Smoke Zero Halogen (LSZH), Pleanum
Jacket Colour	White, Gray, Blue & Orange
Measurement Marking	Yes

## Electrical and Mechanical Characteristics:

- Impedance – 100 Ω ± 15%
- Frequency - 1 MHz to 250 MHz
- DC Resistance - 73 Ω/100m
- Capacitance - 5.6nF/100m
- Propagation Delay Skew - 35 nsec/100m
- Bend Radius - 53.6mm (min)
- Insulation Resistance - 500 MΩ.km (min)
- Dielectric Strength - 1.0kV dc or 0.7kV ac for 1 min
- Voltage – 300 Volts AC or DC
- Operating Temperature – -20°C to 75°C
- Storage Temperature – 0°C to 80°C

## Transmission Characteristics:

Freq. (MHz)	Attenuation (dB) max.	NEXT (dB) min.	PS NEXT (dB) min.	ELFEXT (dB) min.	PSELFEXT (dB) min.	Return Loss (dB) min.
1	2.0	74.3	72.3	67.8	64.8	20.0
4	3.8	65.3	63.3	55.8	52.8	23.0
10	6.0	59.3	57.3	47.8	44.8	25.0
20	8.5	54.8	52.8	41.8	38.8	25.0
31.25	10.7	57.9	49.9	37.9	34.9	23.6
100	19.8	44.3	42.3	27.8	24.8	20.1
200	29.0	39.8	37.8	21.8	18.8	18.0
250	32.8	38.3	36.3	19.8	16.8	17.3

## Ordering Information:

PART NUMBER	DESCRIPTION	LENGTH
OP-C6110023/PVC	Category 6 U/UTP 4 Pair Cable PVC	305 mtr
OP-C6110023/LSZH	Category 6 U/UTP 4 Pair Cable LSZH	305 mtr
OP-C6110023/PLM	Category 6 U/UTP 4 Pair Cable PLEANUM	305 mtr



Optiplus Networks LLC

7950 NW 53<sup>RD</sup> Street, Suite 337,  
Miami, FL.US 33166

Email: [info@optiplusnetworks.com](mailto:info@optiplusnetworks.com)

Tel: +1 7868 716663

[www.optiplusnetworks.com](http://www.optiplusnetworks.com)